

ONE⁵

for piano solo

for Ellsworth Snyder

A handwritten signature in dark ink, appearing to read "Ellsworth Snyder", with a stylized, cursive script.

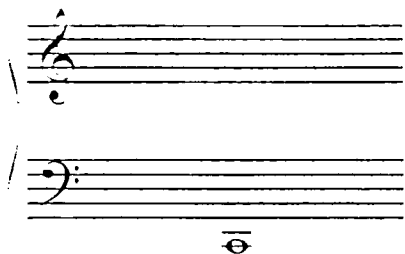
May, 1990

New York City

Separate time brackets for each hand, 21 for the left and 24 for the right. Durations and dynamics are free. If the sustaining pedal is used, hold it down throughout. If not, make as many overlappings as possible using the *sostenuto* pedal if necessary.

ONE⁵

0'00" ↔ 1'15" 1'50" ↔ 2'05"



0'00" ↔ 1'00" 0'40" ↔ 1'40"



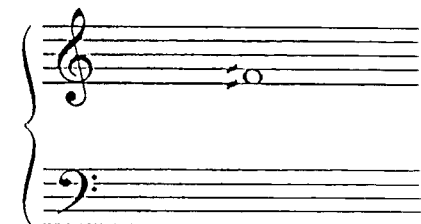
1'30" ↔ 2'00" 1'50" ↔ 2'20"



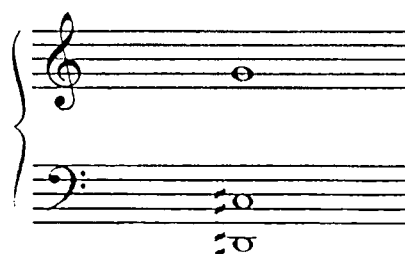
2'00" ↔ 2'15" 2'10" ↔ 2'25"



2'15" ↔ 2'30" 2'25" ↔ 2'40"

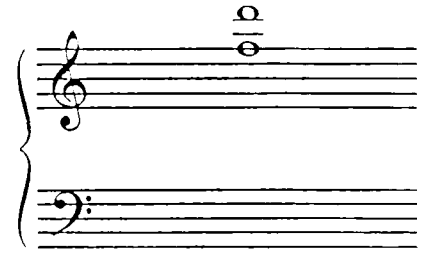


2'20" ↔ 2'35" 2'30" ↔ 2'45"



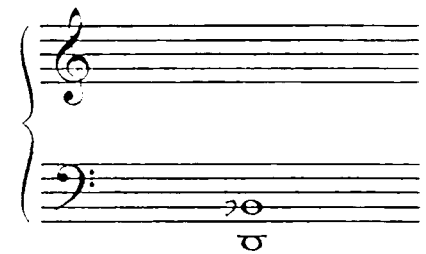
8'15" ↔ 8'30"

8'25" ↔ 8'40"



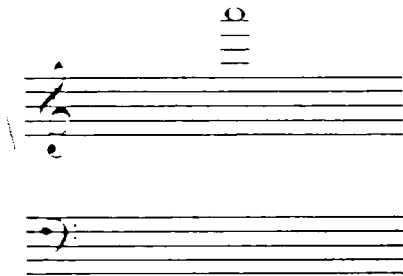
8'20" ↔ 9'20"

9'00" ↔ 10'00"



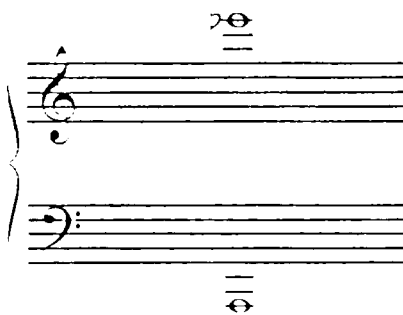
8'35" ↔ 9'35"

9'15" ↔ 10'15"



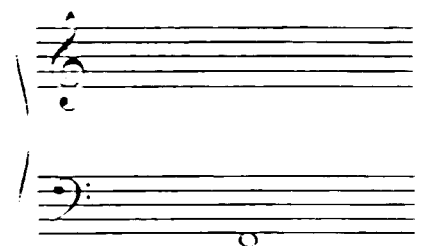
9'50" ↔ 11'05"

10'40" ↔ 11'55"

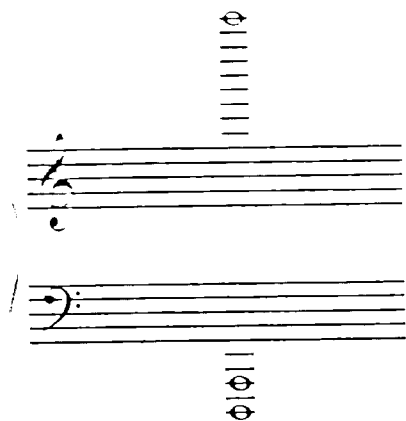


9'55" ↔ 10'10"

10'05" ↔ 10'20"



11'35" ↔ 12'35" 12'15" ↔ 13'15"



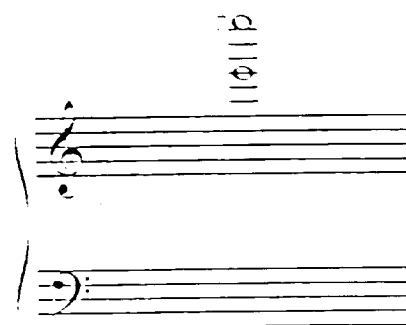
9'55" ↔ 11'10"

10'45" ↔ 12'00"



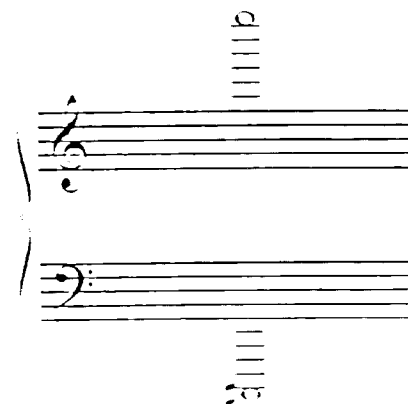
11'45" ↔ 12'30"

12'15" ↔ 13'00"



12'40" ↔ 13'40"

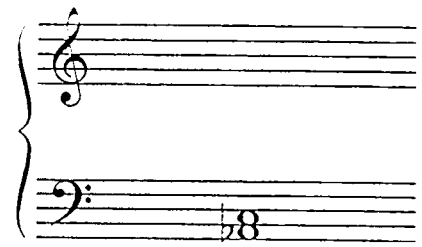
13'20" ↔ 14'20"



12'50" ↔ 14'05" 13'40" ↔ 14'55"



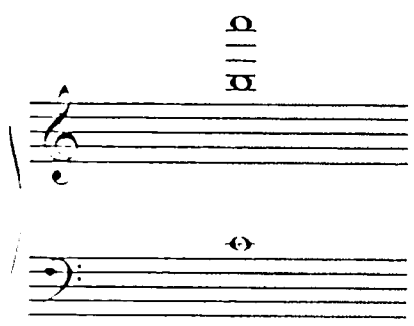
14'15" ↔ 14'30" 14'25" ↔ 14'40"



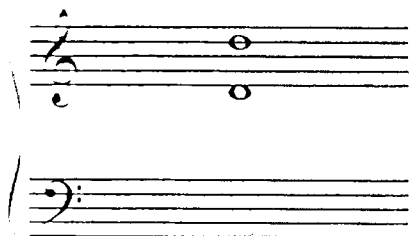
14'25" ↔ 15'10" 14'55" ↔ 15'40"



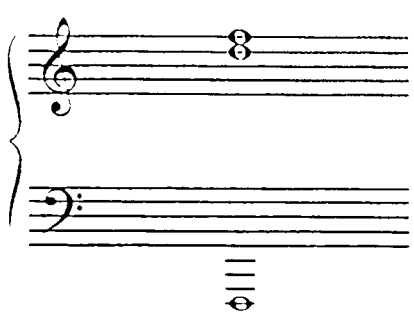
14'50" ↔ 15'05" 15'00" ↔ 15'15"



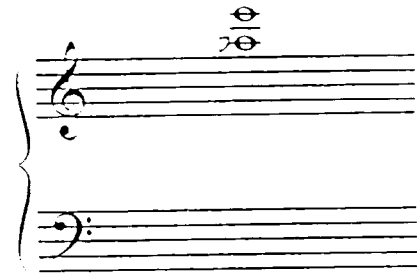
15'10" ↔ 15'25" 15'20" ↔ 15'35"



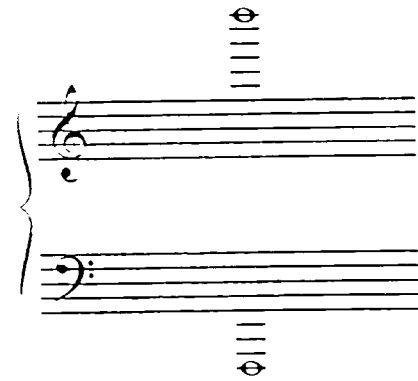
15'25" ↔ 15'55" 15'45" ↔ 16'15"



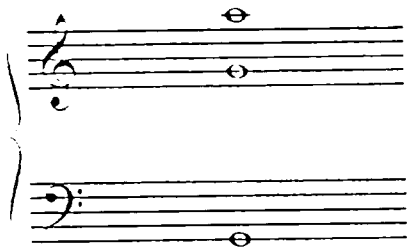
15'30" ↔ 16'00" 15'50" ↔ 16'20"



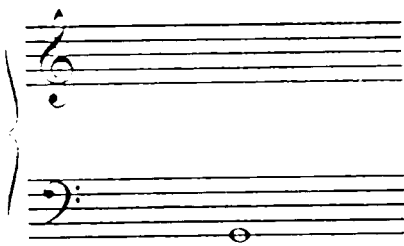
16'10" ↔ 16'40" 16'30" ↔ 17'00"



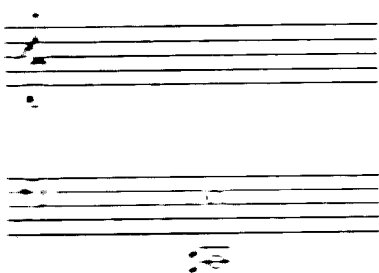
16'10" ↔ 16'25" 16'20" ↔ 16'35"



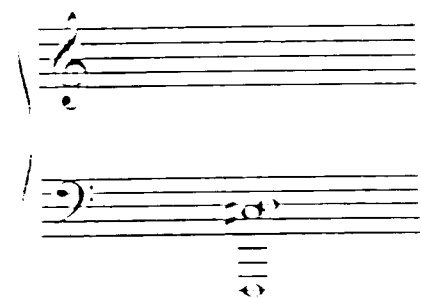
16'25" ↔ 17'10" 16'55" ↔ 17'40"

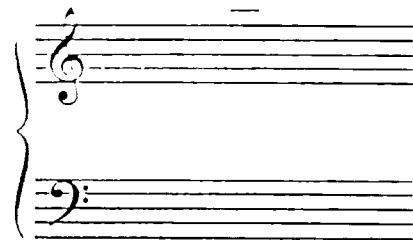
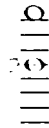


17'15" ↔ 17'50" 17'45" ↔ 18'00"



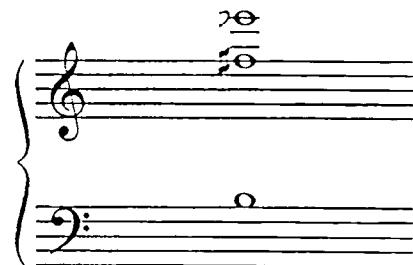
16'50" ↔ 17'20" 17'10" ↔ 17'40"





17'45" ↔ 18'30" 18'15" ↔ 19'00"

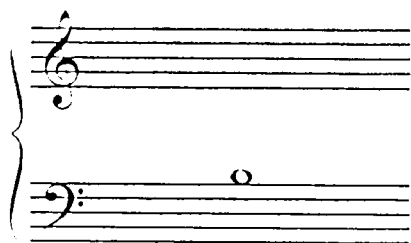
17'45" ↔ 18'30" 18'15" ↔ 19'00"



18'35" ↔ 19'50" 19'25" ↔ 20'00"



18'55" ↔ 19'10" 19'05" ↔ 19'20"



19'00" ↔ 20'00" 19'40" ↔ 20'40"

